

# Ruwac USA Industrial Vacuums

## Pre-Separation Series

### Parts Manual

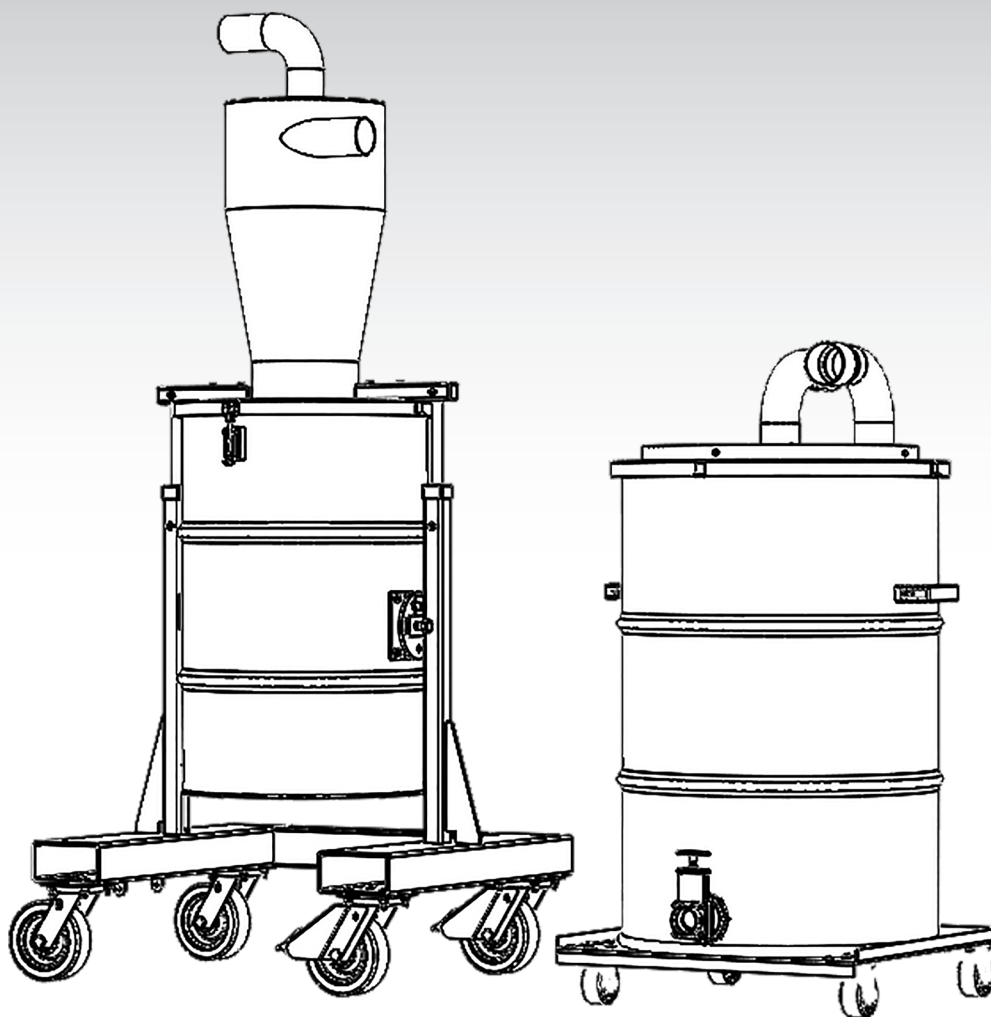
---

Model No.

Serial No.

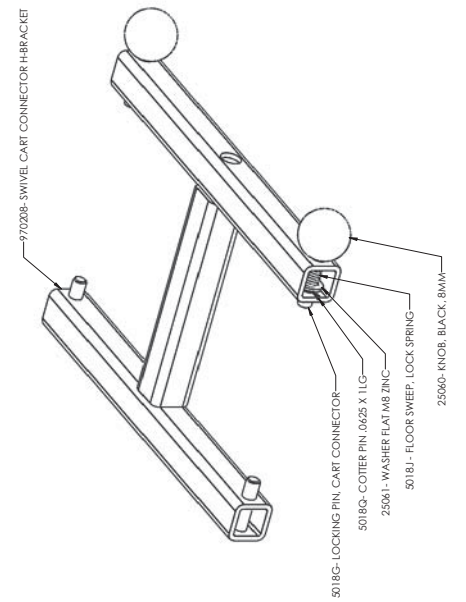
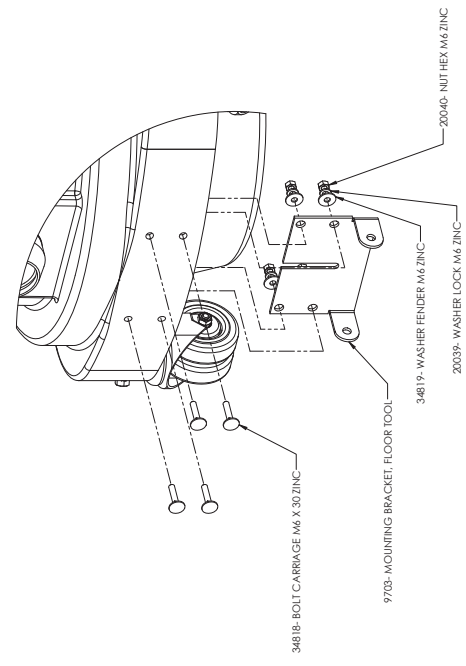
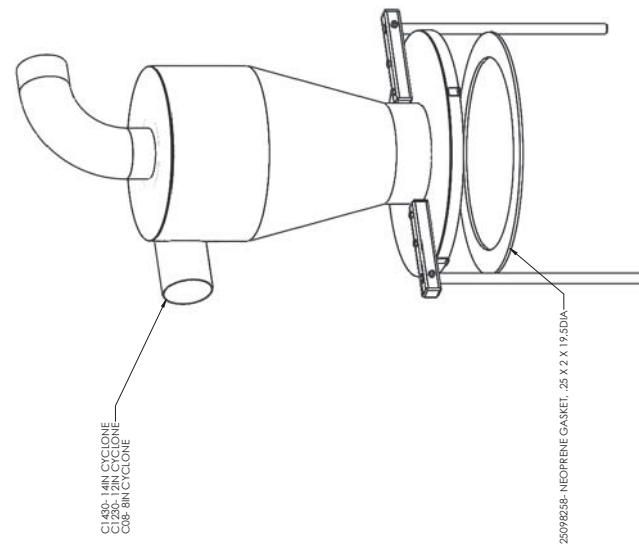
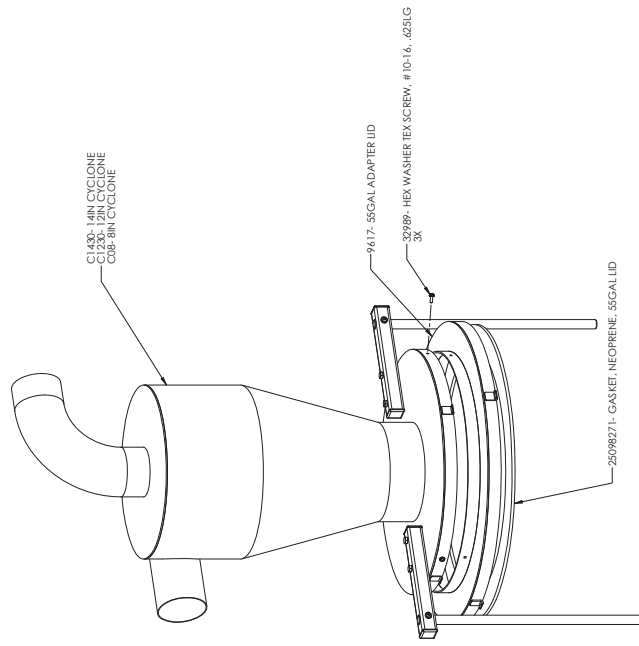
Filter No.

Start-Up Date



Version: 2.1 3/9/18

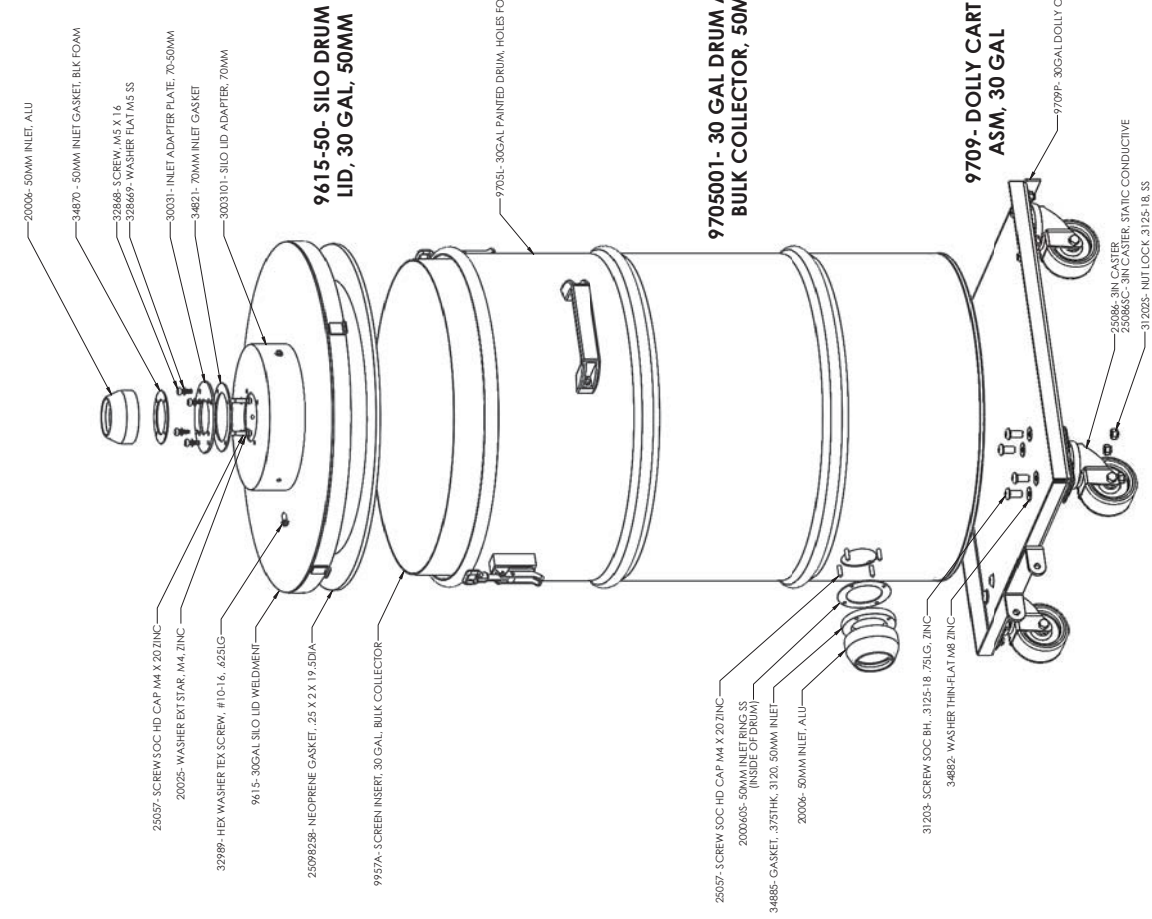


[illegible]

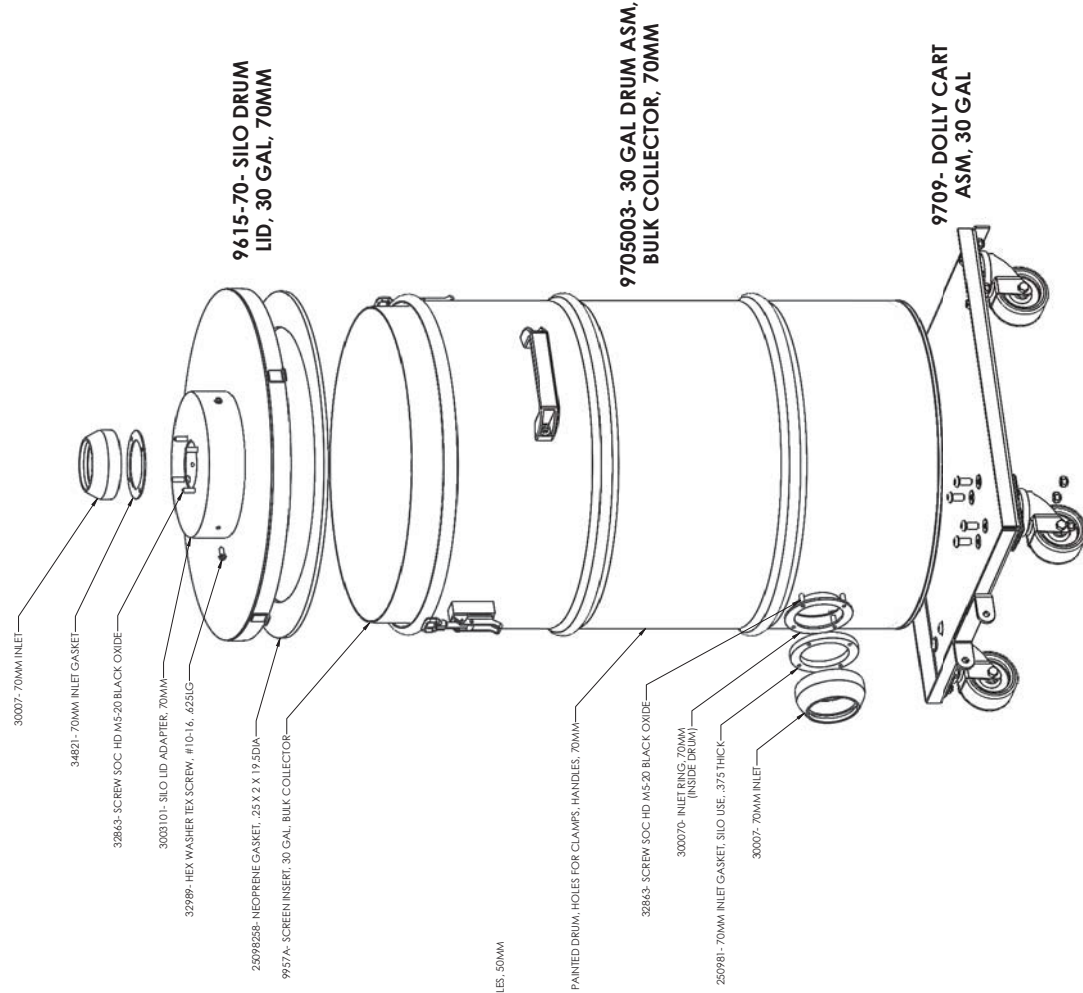
**9756A- BULK COLLECTOR LID ASM**

**9710- DOLLY CART FOR  
55 GALLON DRUM**

[illegible]

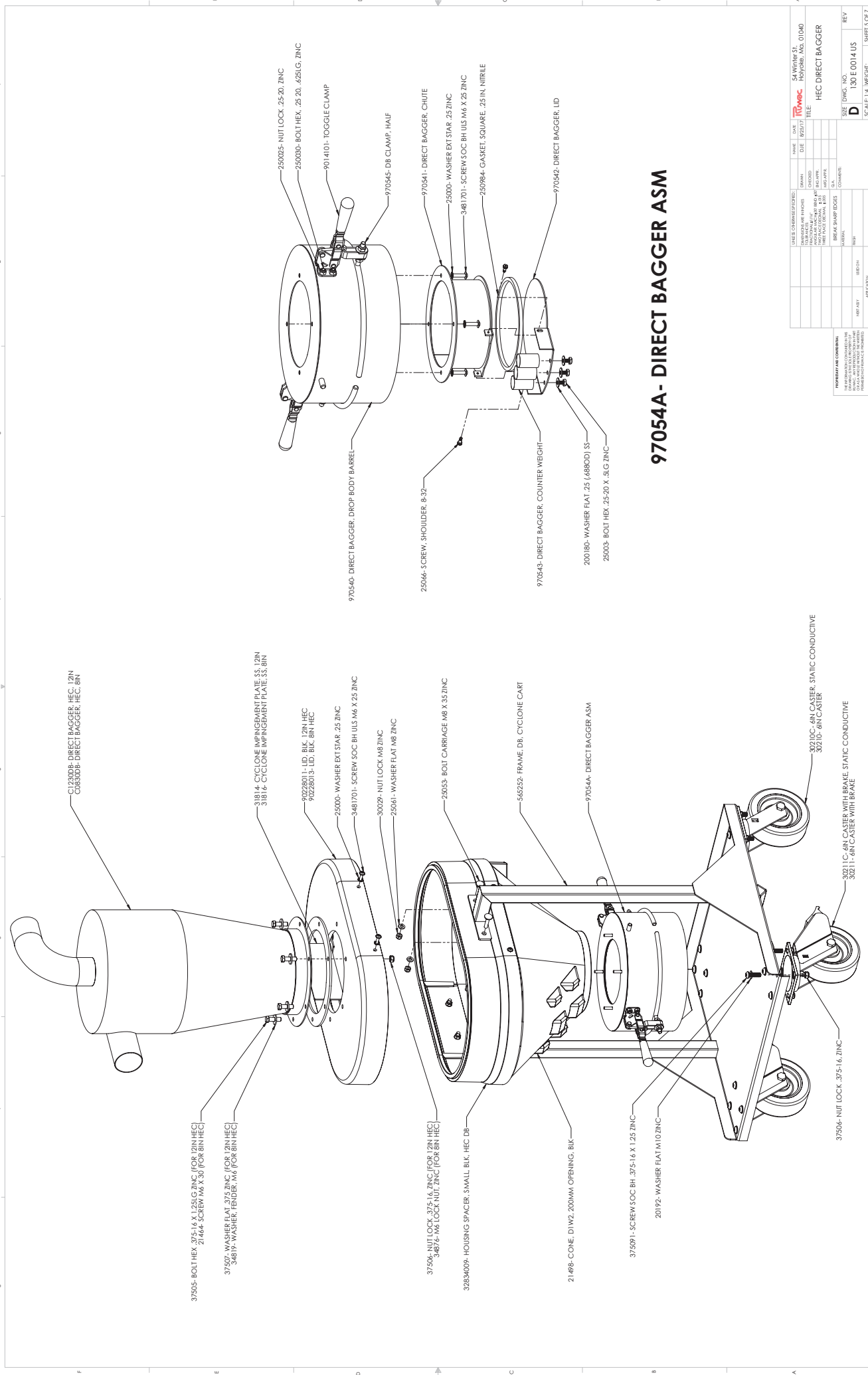


**995750/50- BULK COLLECTION SYSTEM, 30 GAL, 50MM**



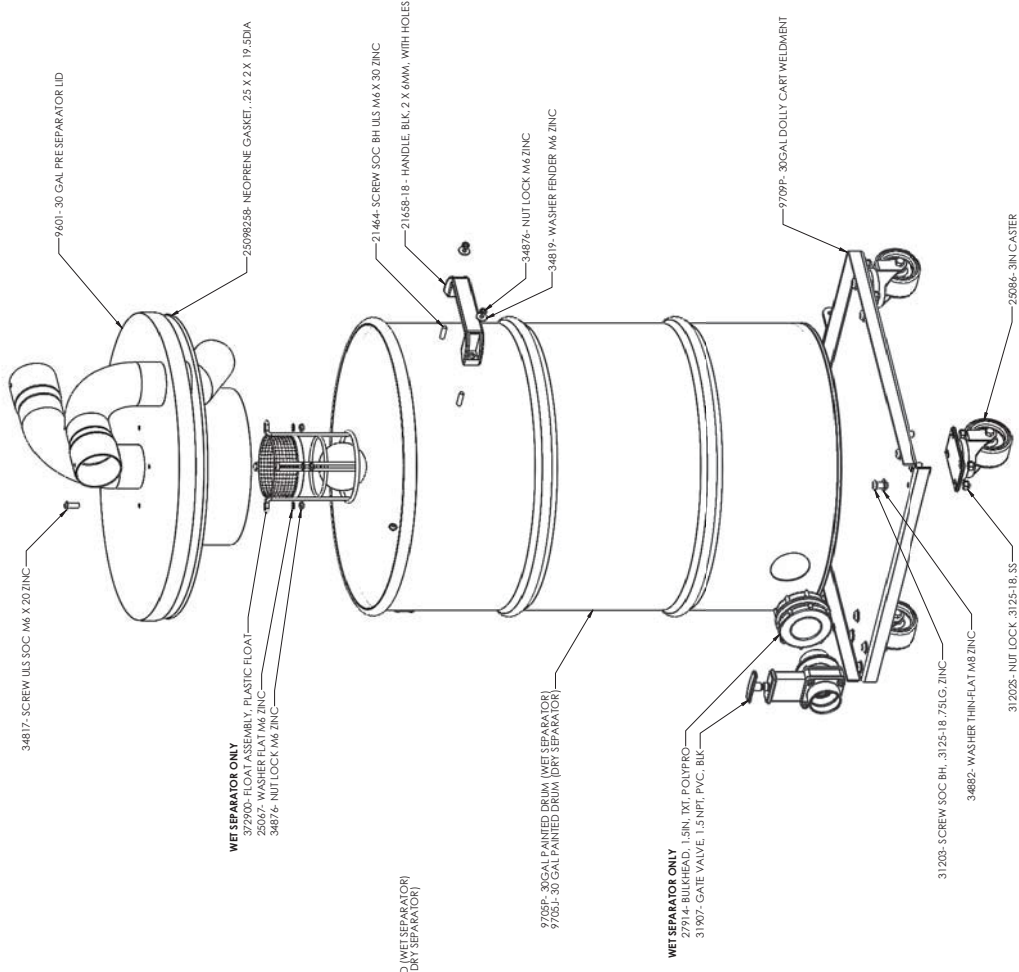
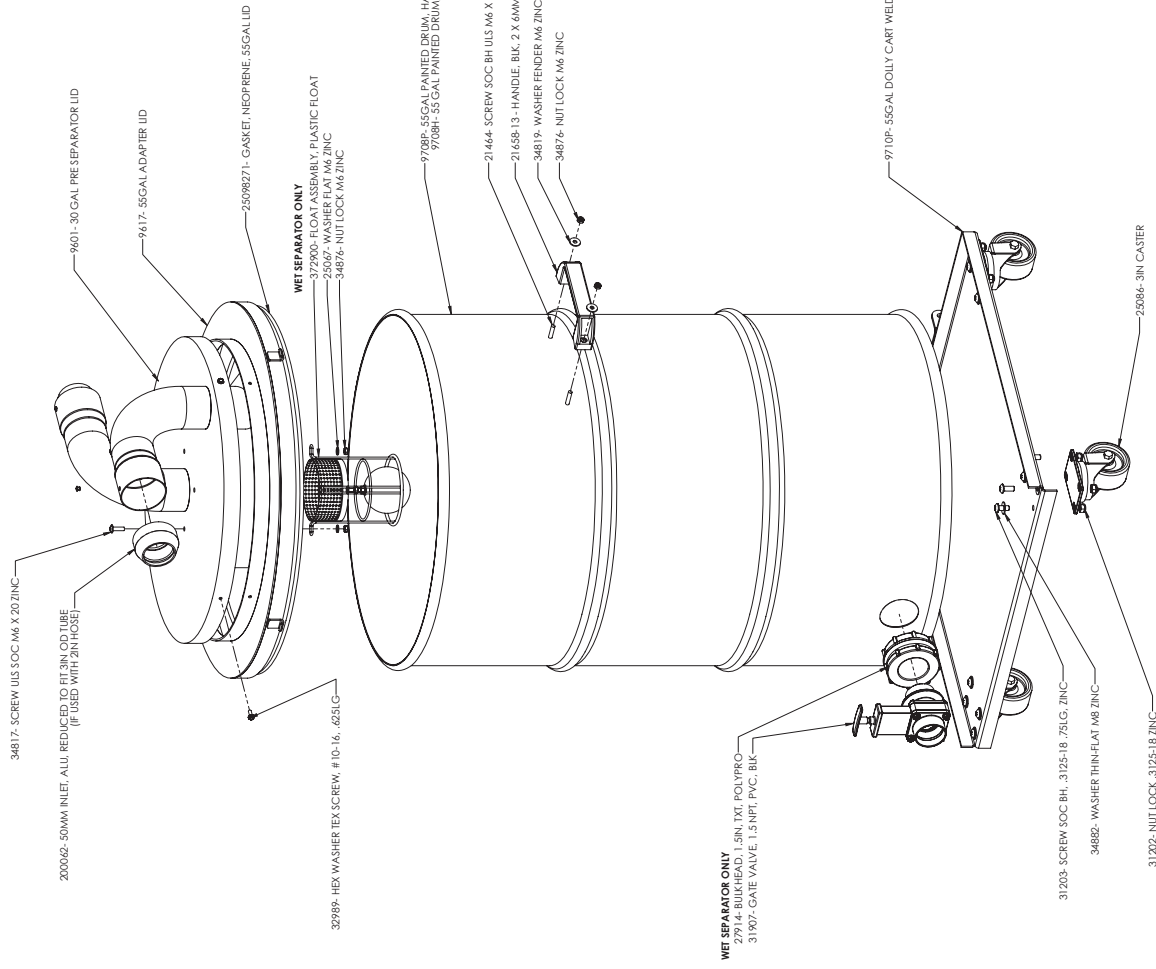
**995770/70- BULK COLLECTION SYSTEM, 30 GAL, 50MM**

[illegible]



97054A- DIRECT BAGGER ASM

DATE	REV	BY	CHKD	APP'D	DATE	REV	BY	CHKD	APP'D
05/27/17	1	SA	SA	SA	05/27/17	1	SA	SA	SA
SA WinView 31					SA WinView 31				
Hoyabag, A.S. 01040					Hoyabag, A.S. 01040				
TITLE					TITLE				
HEC DIRECT BAGGER					HEC DIRECT BAGGER				
C.A.					C.A.				
COMMENTS					COMMENTS				
BREAK SHARP EDGES					BREAK SHARP EDGES				
TOLERANCES					TOLERANCES				
FRACTIONAL					FRACTIONAL				
DECIMAL					DECIMAL				
HOLE POSITION					HOLE POSITION				
HOLE DIA					HOLE DIA				
HOLE DIA					HOLE DIA				
HOLE DIA					HOLE DIA				
HOLE DIA					HOLE DIA				
HOLE DIA					HOLE DIA				
HOLE DIA					HOLE DIA				
HOLE DIA					HOLE DIA				
HOLE DIA					HOLE DIA				
HOLE DIA					HOLE DIA				
HOLE DIA					HOLE DIA				
HOLE DIA					HOLE DIA				
HOLE DIA					HOLE DIA				
HOLE DIA					HOLE DIA				
HOLE DIA					HOLE DIA				
HOLE DIA					HOLE DIA				
HOLE DIA					HOLE DIA				
HOLE DIA					HOLE DIA				
HOLE DIA					HOLE DIA				
HOLE DIA					HOLE DIA				
HOLE DIA					HOLE DIA				
HOLE DIA					HOLE DIA				
HOLE DIA					HOLE DIA				
HOLE DIA					HOLE DIA				
HOLE DIA					HOLE DIA				
HOLE DIA					HOLE DIA				
HOLE DIA					HOLE DIA				
HOLE DIA					HOLE DIA				
HOLE DIA					HOLE DIA				
HOLE DIA					HOLE DIA				
HOLE DIA					HOLE DIA				
HOLE DIA					HOLE DIA				
HOLE DIA					HOLE DIA				
HOLE DIA					HOLE DIA				
HOLE DIA					HOLE DIA				
HOLE DIA					HOLE DIA				
HOLE DIA					HOLE DIA				
HOLE DIA					HOLE DIA				
HOLE DIA					HOLE DIA				
HOLE DIA					HOLE DIA				
HOLE DIA					HOLE DIA				
HOLE DIA					HOLE DIA				
HOLE DIA					HOLE DIA				
HOLE DIA					HOLE DIA				
HOLE DIA					HOLE DIA				
HOLE DIA					HOLE DIA				
HOLE DIA					HOLE DIA				
HOLE DIA					HOLE DIA				
HOLE DIA					HOLE DIA				
HOLE DIA					HOLE DIA				
HOLE DIA					HOLE DIA				
HOLE DIA					HOLE DIA				
HOLE DIA					HOLE DIA				
HOLE DIA					HOLE DIA				
HOLE DIA					HOLE DIA				
HOLE DIA					HOLE DIA				
HOLE DIA					HOLE DIA				
HOLE DIA					HOLE DIA				
HOLE DIA					HOLE DIA				
HOLE DIA					HOLE DIA				
HOLE DIA					HOLE DIA				
HOLE DIA					HOLE DIA				
HOLE DIA					HOLE DIA				
HOLE DIA					HOLE DIA				
HOLE DIA					HOLE DIA				
HOLE DIA					HOLE DIA				
HOLE DIA					HOLE DIA				
HOLE DIA					HOLE DIA				
HOLE DIA					HOLE DIA				
HOLE DIA					HOLE DIA				
HOLE DIA					HOLE DIA				
HOLE DIA					HOLE DIA				
HOLE DIA					HOLE DIA				
HOLE DIA					HOLE DIA				
HOLE DIA					HOLE DIA				
HOLE DIA					HOLE DIA				
HOLE DIA					HOLE DIA				
HOLE DIA					HOLE DIA				
HOLE DIA					HOLE DIA				
HOLE DIA					HOLE DIA				
HOLE DIA					HOLE DIA				
HOLE DIA					HOLE DIA				
HOLE DIA					HOLE DIA				
HOLE DIA					HOLE DIA				
HOLE DIA					HOLE DIA				
HOLE DIA					HOLE DIA				
HOLE DIA					HOLE DIA				
HOLE DIA					HOLE DIA				
HOLE DIA					HOLE DIA				
HOLE DIA					HOLE DIA				
HOLE DIA					HOLE DIA				
HOLE DIA					HOLE DIA				
HOLE DIA					HOLE DIA				
HOLE DIA					HOLE DIA				
HOLE DIA					HOLE DIA				
HOLE DIA					HOLE DIA				
HOLE DIA					HOLE DIA				
HOLE DIA					HOLE DIA				
HOLE DIA									



9952- WET SEPARATOR, 30 GAL  
9951- DRY SEPARATOR, 30 GAL

9954- WET SEPARATOR, 55 GAL  
9953- DRY SEPARATOR, 55 GAL

[illegible]



